

NOTES:
 PLANS FOR ALL INTERCEPTORS MUST BE SUBMITTED TO THE CITY FOR APPROVAL. PLANS MUST SHOW ALL DIMENSIONS, REINFORCED STEEL AND LOCATION ON THE SITE.

TANK SHALL BE DESIGNED TO HS20 LOADING IF USED IN TRAFFIC OR PARKING AREA.

WALLS SHALL BE A MIN. OF 3" THICK

CONCRETE SHALL HAVE A MINIMUM COMPRESSIVE STRENGTH OF 4000 PSI.

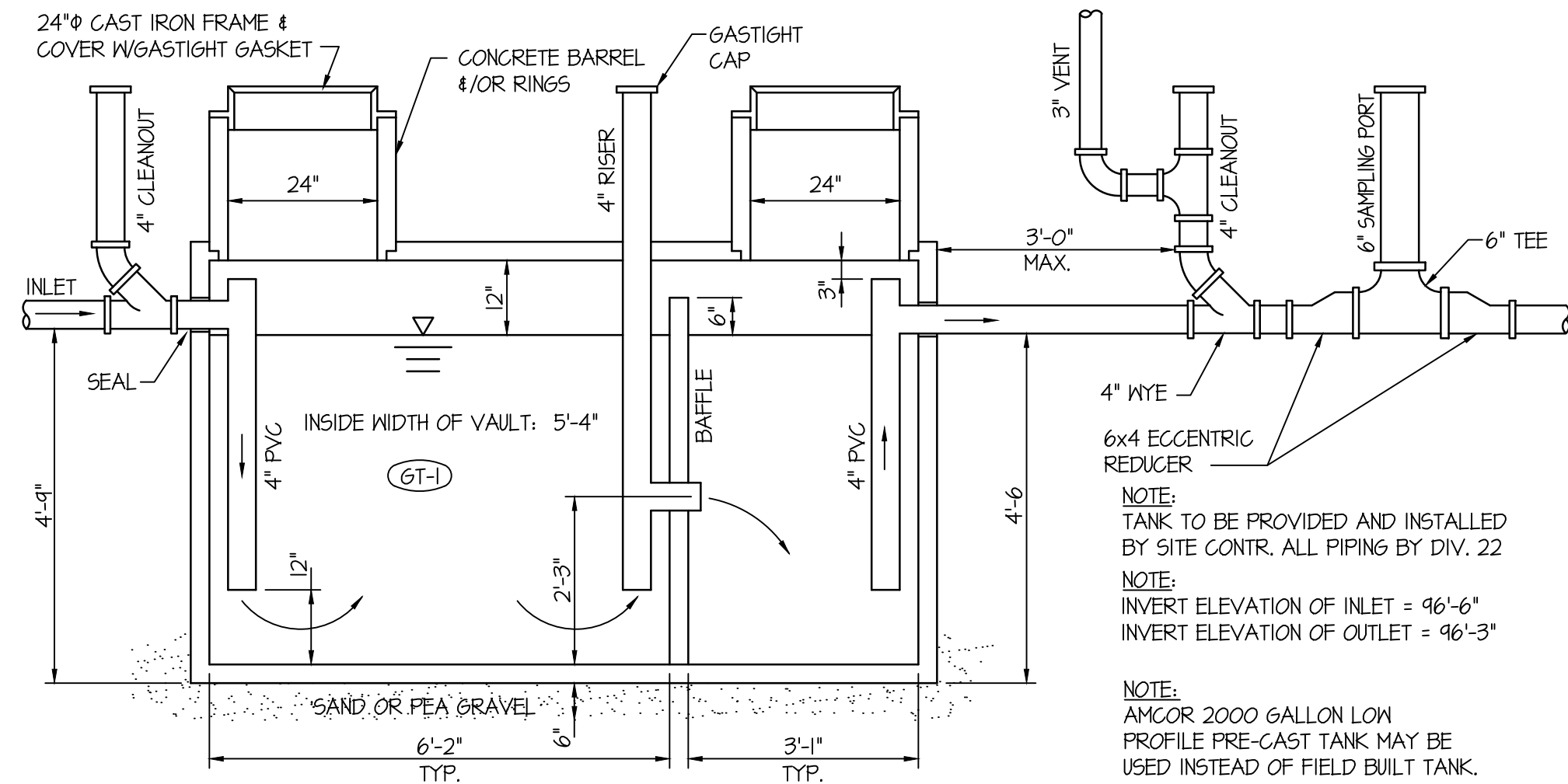
TANKS SHALL BE CERTIFIED BY AN INDEPENDENT LAB FOR CAPACITY & STRUCTURAL STABILITY.

INTERNAL PIPING SHALL BE BRACED. ALL BRACKETS, NUTS AND BOLTS SHALL BE STAINLESS STEEL.

TANKS SHALL BE PERMANENTLY & LEGIBLY MARKED WITH MANUFACTURER'S NAME, MODEL AND DATE.

TANKS MUST BE FILLED WITH CLEAN WATER PRIOR TO BACKFILLING FOR LEAK INSPECTION, THEN BACKFILL TO THE FLOW LINE PRIOR TO REQUESTING SECOND INSPECTION.

INTERCEPTOR SHALL BE PLACED AS CLOSE AS PRACTICAL TO THE FIXTURES BEING SERVED AND AWAY FROM MAIN DOOR TO THE BUILDING.



SAND AND GREASE INTERCEPTOR DETAIL
 NO SCALE

FIXTURE SCHEDULE					
SYM.	DESCRIPTION	HOT	COLD	WASTE	VENT
(A-1)	AIR COMPRESSOR - OWNER FURNISHED AND CONTRACTOR INSTALLED. SEE PLUMBING FLOOR PLANS FOR LOCATION AND PIPING.	---	---	---	---
(AO-1)	AIR OUTLET - DEWIBISS MODEL P-HC-235 QUICK CONNECT HOSE COUPLING WITH V1-256 SHUT-OFF VALVE AND 1/2" SUPPLY LINE.	---	---	---	---
(DW-1)**	UNDER COUNTER DISHWASHER - ROUGH-IN AND CONNECT 1/2" HOT WATER WITH STOP VALVE & 3/4" DRAIN LINE TO SINK SIDE OF P-TRAP ON S-1 USING DISHWASHER CONNECTION.	1/2"	---	3/4" TO S-1	---
(FD-1)	2" FLOOR DRAIN - ZURN Z-415 WITH 5"Ø NICKEL-BRONZE STRAINER AND 2" DEEP SEAL P-TRAP WITH ZURN I022 TRAP PRIMER.	---	1/2"	2"	2"
(FD-2)	2" FLOOR DRAIN - ZURN Z-415 WITH 5"Ø NICKEL-BRONZE STRAINER AND 2" DEEP SEAL P-TRAP.	---	---	2"	2"
(FS-1)	FLOOR SINK - ZURN Z-1400-KG WITH WHITE ENAMEL FINISH, DOME STRAINER AND 4" DEEP SEAL P-TRAP. PROVIDE HALF GRATE OVER SINK.	---	---	4"	2"
(GT-1)	SAND AND GREASE INTERCEPTOR - SEE DETAIL ON THIS SHEET.	---	---	4"	3"
(HB-1)	EXTERIOR HOSE BIBB - ZURN MODEL Z-1310 "ECOLOTRON" WITH REMOVABLE KEY. LENGTH TO SUIT WALL THICKNESS.	---	3/4"	---	---
(HB-2)	INTERIOR HOSE BIBB - WOODFORD MODEL 24 WITH VACUUM BREAKER, HANDLE, AND 1/2" INLET. MOUNT AT 48" AFF ON COLUMN, COMPLETE WITH BALL TYPE SHUT-OFF VALVE.	---	1/2"	---	---
(L-1)	ADA COUNTERTOP LAVATORY - KOHLER MODEL K-2405-4 SELF-RIMMING "FARMINGTON" WITH MOEN L4601 LEVER FAUCET, K-T115 OPEN GRID STRAINER, 1/2" BALL STOPS AND 1-1/4" P-TRAP. PROVIDE INSULATING JACKET ON HW PIPING AND P-TRAP.	1/2"	1/2"	1-1/2"	1-1/2"
(L-2)**	COUNTERTOP LAVATORY - KOHLER MODEL K-2405-4 SELF-RIMMING "FARMINGTON" WITH MOEN L4601 LEVER FAUCET, K-T115 OPEN GRID STRAINER, 1/2" BALL STOPS AND 1-1/4" P-TRAP.	1/2"	1/2"	1-1/2"	1-1/2"
(LS-1)**	S.S. LAUNDRY SINK - JUST MANUFACTURING CO. MODEL J-12T S.S. SINK WITH J5-41-T66A WALL MOUNTED FAUCET, J-15-F5 STRAINER & TAILPIECE ASSEMBLY, 1-1/2" P-TRAP AND 1/2" BALL TYPE STOP VALVES.	1/2"	1/2"	2"	2"
(RB-1)**	REFRIGERATOR SUPPLY BOX - GUY GRAY MODEL BIM015 W/ 1/2" x 1/4" SHUT OFF VALVE.	---	1/2"	---	---
(RP-1)	CIRCULATING PUMP - GRUNDFOS MODEL UP15-10BT BRONZE PUMP WITH 3/4" FLANGES (2 GPM @ 5' OF HEAD) 120/60/1	3/4" HWRC	---	---	---
(S-1)**	DOUBLE COMPARTMENT SINK - ELKAY MODEL LR-3319 WITH 1Ø GA TYPE 304 STAINLESS STEEL CONSTRUCTION, 3-HOLE FAUCET DRILLINGS, MOEN 7560SL FAUCET, (2) LK-99 STRAINERS, 1-1/2" P-TRAP AND 1/2" BALL TYPE STOP VALVES.	1/2"	1/2"	1-1/2"	1-1/2"
(SH-1)	ADA SHOWER - OASIS MODEL 9HFM-3031 30"X31"X16-1/4" SHOWER WITH FOLD UP SEAT, GRAB BARS, SHOWER CURTAIN & ROD, MOEN 2352 SHOWER VALVE & MOEN 3669EP HANDHELD SHOWER ASSEMBLY WITH 24" SLIDE BAR AND T4P BALANCING VALVE. PROVIDE 2" DRAIN WITH DEEP SEAL P-TRAP. SEE PLAN FOR RIGHT OR LEFT HAND.	1/2"	1/2"	---	---
(SH-2)**	SHOWER - AQUATIC MODEL 13632P 36"X36"X12" SHOWER WITH CURTAIN & ROD, MOEN 2352 T4P BALANCING VALVE WITH SHOWER HEAD ARM, FLANGE AND FIXED SHOWER HEAD. PROVIDE 2" DRAIN WITH DEEP SEAL P-TRAP. SEE PLAN FOR RIGHT OR LEFT HAND.	1/2"	1/2"	---	---
(TD-1)	TRENCH DRAIN - ZURN MODEL Z086 LINEAR TRENCH DRAIN SYSTEM WITH 4" END OUTLET AND 6" WIDE HEAVY DUTY GRATE. TRENCH DRAIN TO BE 16'-0" IN LENGTH. SEE FLOOR PLANS.	---	---	4"	---
(WB-1)**	WASHING MACHINE HOOK-UP - GUY GRAY MODEL BB200TS COMBINATION BOX COMPLETE WITH 2" WASTE LINE AND P-TRAP, 1/2" HOT & COLD WATER LINES FROM TOP.	1/2"	1/2"	2"	2"
(WC-1)	ADA TANK TYPE WATER CLOSET - KOHLER K-3427 "HIGHLINE" W/ ELONGATED BOWL, K-4610-C WHITE OPEN FRONT SEAT, BOLT CAPS AND 1/2" STOP VALVE.	---	1/2"	4"	2"
(WC-2)**	TANK TYPE WATER CLOSET - KOHLER K-3422 "WELLNORTH" W/ ELONGATED BOWL, K-4613 WHITE SEAT WITH LID, BOLT CAPS AND 1/2" STOP VALVE.	---	1/2"	4"	2"
(WH-1)	ELECTRIC WATER HEATER - A.O. SMITH MODEL ECRT-50 50 GALLON ELECTRIC WATER HEATER WITH 4500 WATT UPPER & LOWER ELEMENTS (240/60/1), AMITROL ST-5 EXPANSION TANK, T4P VALVE. PROVIDE POWERS 3/4" LM-491-10 MIXING VALVE.	3/4"	3/4"	---	---

** FIXTURE TO BE INSTALLED UNDER BID ALT. #2

Myers ■ Anderson
 ■ Architecture
 ■ Interior Design
 ■ Landscape Architecture
 101 North Main Street ■ Pocatello, Idaho 83204 ■ Tel. (208) 232-3711 ■ Fax. (208) 232-3752
 849 Front Street, Suite 202 ■ Evanston, Wyoming 82930 ■ Tel. (307) 897-0954

ASLA
 NCAAB
 AIA

PROJECT:
NCRFD NEW FACILITY
CHALLIS, IDAHO

SHEET TITLE:
PLUMBING DETAILS & SCHEDULES

CONTRACTOR SHALL VERIFY ALL DIMENSIONS & CONDITIONS SHOWN OR IMPLIED

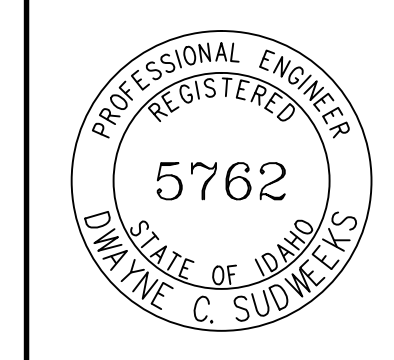
DRAWING SCALE APPLIES TO 22' X 34' SHEET SIZE

REVISION	DATE

DRAWN BY: SR
 CHECKED BY: DCS
 JOB NUMBER: 18464
 PROJECT DATE: JAN 2020
 SHEET OF

ORIGINAL DRAWING SIGNED BY: DWAYNE C. SUDWEEKS
 DATE ORIGINAL SIGNED: JAN. 15, 2020
 ORIGINAL ON FILE AT ENGINEERED SYSTEMS ASSOCIATES
 1355 EAST CENTER, POCATELLO, IDAHO 83201

Engineered Systems Associates
 1355 EAST CENTER
 POCATELLO, IDAHO 83201
 PHONE: (208) 233-0501
 FAX: (208) 233-0529
 EMAIL: esa@engsystems.com
 ESA JOB NUMBER: 19057



P201